



Workshop Learning Resource 11.d Basic hardware maintenance: RAM and Hard Drive upgrading

Overview:

This resource will help you replace or upgrade the memory (RAM) and the hard drive in your laptop.

1. Go get a screw driver!

...one that will fit the screws on the back of your laptop.

It goes without saying, but do make sure the laptop is unplugged from the mains!

And then turn it over on a stable, dry surface.

2. Replacing RAM



Most laptops will have an easily accessible hatch held in with screws in the middle of the back. This is where you'll find the RAM.

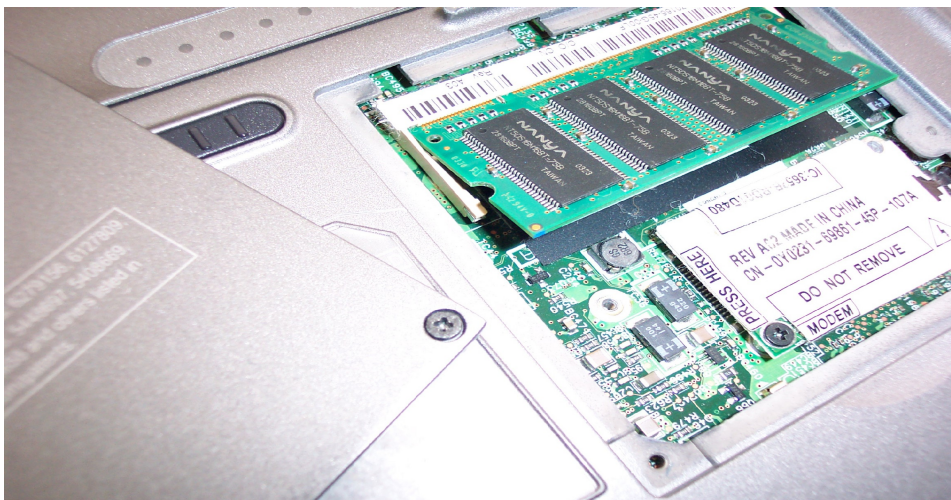
There are different types of RAM, so if you intend to buy more ensure you take the existing RAM from your laptop to the shop so you'll be sure to get the right type. The wrong type simply won't fit!

RAM is held in place by a clip mechanism each side of the RAM stick.

Workshop Learning Resource 11.d Basic hardware maintenance: RAM and Hard Drive upgrading

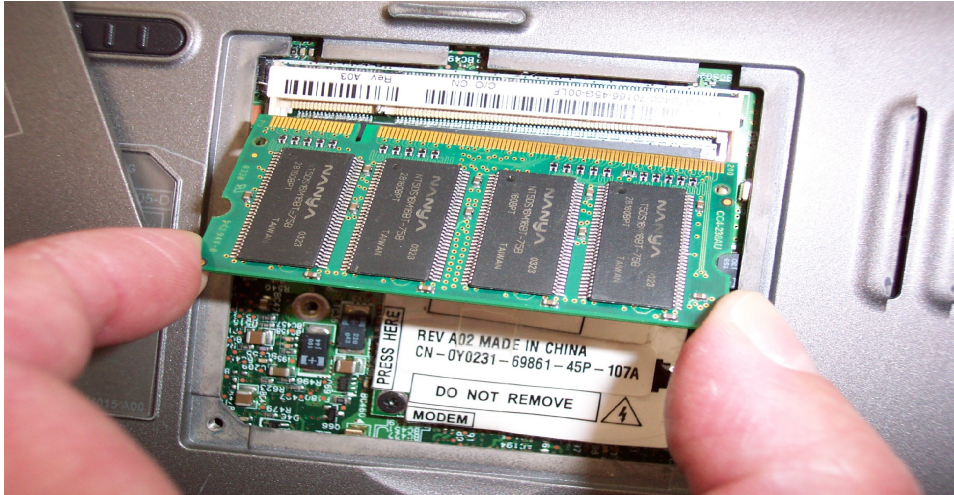


Gently move the clips outward and the RAM stick will pop up in its groove.

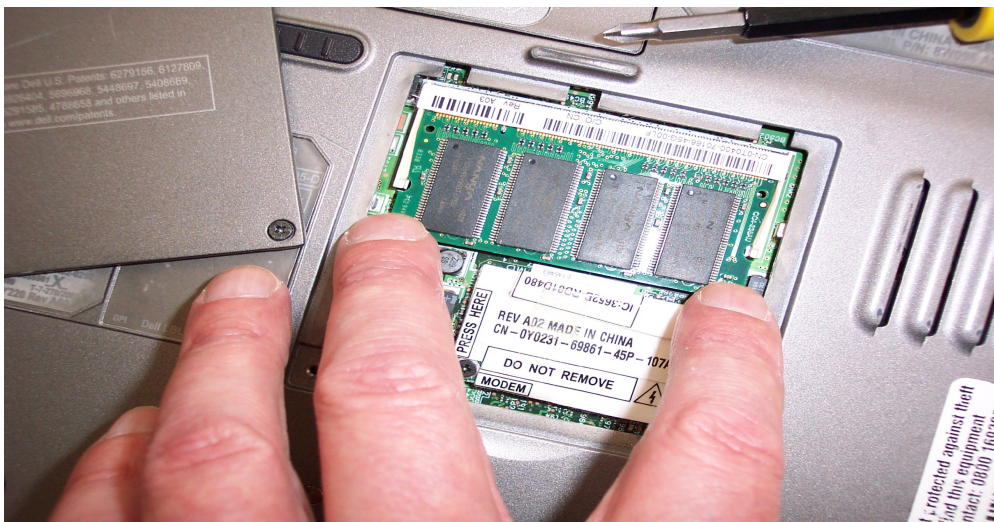


You can then pull it out by its sides.

Workshop Learning Resource 11.d Basic hardware maintenance: RAM and Hard Drive upgrading



Fitting RAM is the same process in reverse. Slot the RAM stick gently in the groove and then gently push it down so the clips hold it. Note that a RAM has a break in the side fitting into the groove. Ensure the RAM stick is the right way around to fit properly!



Then put back the hatch and put back the screws.



Workshop Learning Resource 11.d Basic hardware maintenance: RAM and Hard Drive upgrading

3. Replacing the Hard Drive

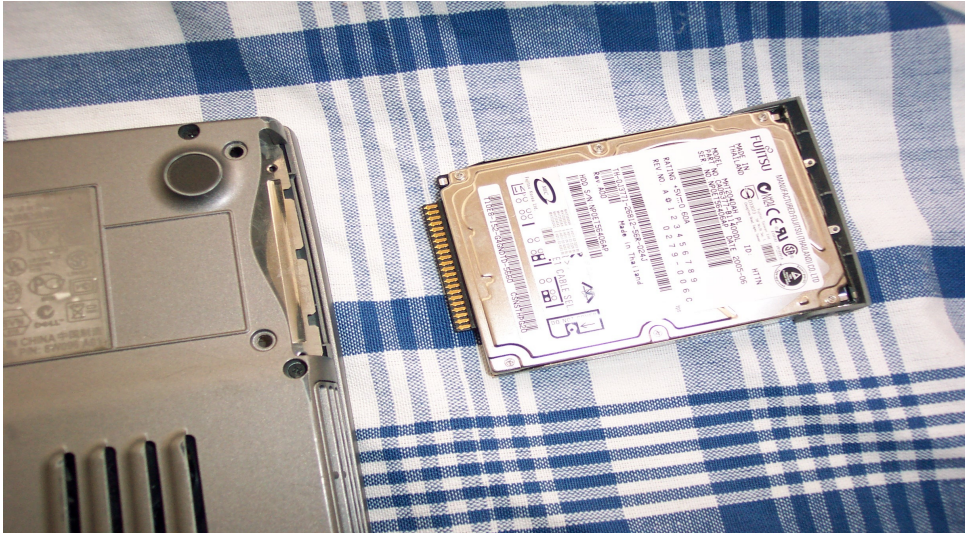


Depending on the make and model of your laptop, access to the hard drive will be in different places. The laptop in the photos has its at the right hand corner.

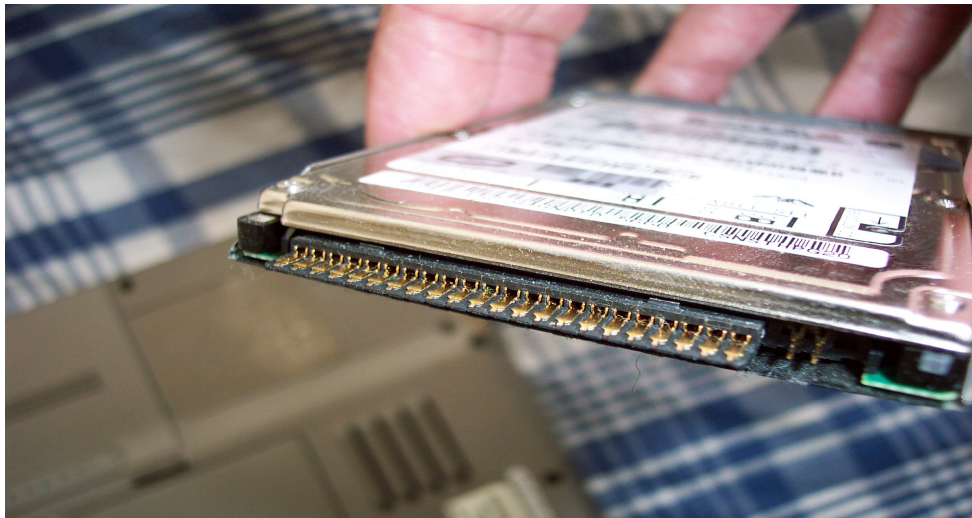


Undo the screws holding it in place. In this hard drive's caddy (its container) there are ridges to help you pull it out.

Workshop Learning Resource 11.d Basic hardware maintenance: RAM and Hard Drive upgrading



Once pulled out and turned over you can see that this hard drive has a label on it. This will tell you what kind of hard drive it is, how fast it is and how large. You will need to take the hard drive out of its caddy to replace it.



At one end is a row of teeth – these are how data moves to and from the hard drive. These are different for different types. Ensure if you are buying a new hard drive that it is the same type, otherwise it will not fit in your computer!! Take it to the shop with you to make sure! Obviously, re-fitting is the reverse process.



Workshop Learning Resource 11.d Basic hardware maintenance: RAM and Hard Drive upgrading

Conclusion:

You have seen how easy it can be to do some basic upgrades to your laptop hardware.

